

REEL 311 PAGE 72

In my opinion, this plat is correct representation of the land  
 platted and has been prepared in conformity with the minimum  
 standards and requirements of law.

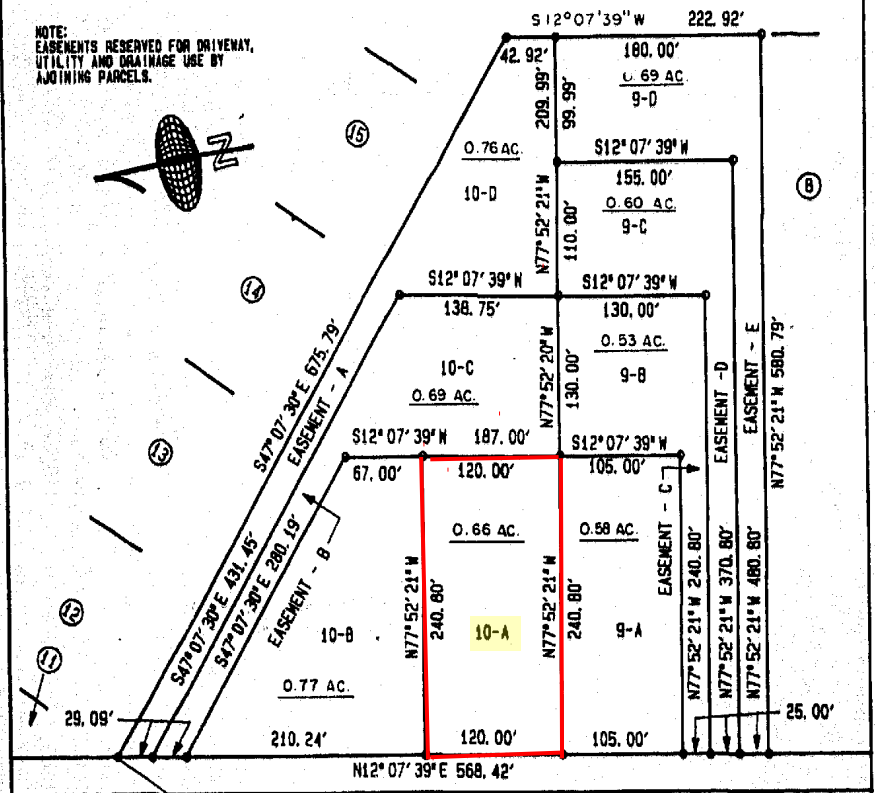
THIS PLAT COMPILED FROM PLATS OF RECORD  
 AND IS SUBJECT TO FIELD SURVEY

19

NOTE:  
 COUNTY WATER AVAILABLE TO LOTS.

REALTY  
 REEL  
 517

NOTE:  
 EASEMENTS RESERVED FOR DRIVENAY,  
 UTILITY AND DRAINAGE USE BY  
 ADJOINING PARCELS.


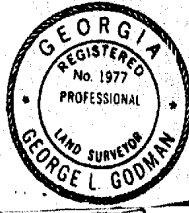


700.00' TO R/W OF BEDFORD HILL ROAD  
**DONE ROBEEN ROAD 30° R/W**

EASEMENTS PROVIDING INGRESS AND EGRESS ARE THE PRIVATE PROPERTY OF THE OWNER,  
 WHO HAS FULL AND PERPETUAL RESPONSIBILITY FOR THEIR MAINTENANCE. THE OWNER  
 RELEASES THE GOVERNING BODY FROM ANY AND ALL CLAIMS, DAMAGES, OR DEMANDS  
 ARISING ON ACCOUNT OF SUCH EASEMENTS.

APPROVED SUBDIVISION  
 Date 5-24-89

*George L. Godman*  
 BY AUTHORITY OF AUGUSTA-RICHMOND  
 COUNTY PLANNING COMMISSION

COMPILED <b>PLAT</b> For:	<b>DALLAS BLUME</b>	
Description:	RE-SUBD. OF LOTS 9 & 10, PIONEER ESTATES S/D	Scale: 1" = 100'
COUNTY OF:	RICHMOND	STATE OF: GEORGIA
	<b>GEORGE L. GODMAN AND ASSOCIATES</b>	
	GEORGIA REGISTERED LAND SURVEYOR 1977 SOUTH CAROLINA REGISTERED LAND SURVEYOR 6266 1773 KISSINGBOMER ROAD SUITE - 6 AUGUSTA, GEORGIA 30904	
Equipment Used:	Angular Closure:	

GA, RICHMOND COUNTY CLERK SUPERIOR COURT  
 FILED FOR RECORD MAY 26, 1989 AT 11:08AM  
 RECORDED MAY 26, 1989